

PRCC's COVID-Safe Regathering Guidelines



Paso Robles
Community Church

Introduction: As We Look to Regather PRCC

Without a doubt, PRCC has faced the challenge of the COVID-19 pandemic with faith, innovation and compassion. Though the doors on our building have been closed for large gatherings, our church has been open to our community and we've continued to support local and foreign ministry-partners as we've sought ways to invest in the lives of our neighbors by living the Gospel outside our church building. I'm amazed to see how well we have shifted our ministries online and how God has worked through you all as we attempt reaching people in new ways.

The leadership of PRCC affirms that the Church is essential to life. We believe that the local church is and will continue to be the guidepost to hope and life through Jesus Christ and our work is integral to the spiritual, emotional and mental well-being of our community. We look forward to the day when we can worship together in our church building.

As we consider the options of regathering, we want all of you, our church family, to know that we consider the health and safety of the PRCC family and guests a top priority. We are giving our regathering strategy a lot of careful thought, prayer, and consideration. The question is not "can we open?" but "when" and "how" we open?"

This document is designed to help clarify key safety measures and protocols that are important to everyone's protection and are in adherence with the tenets of our faith and the guidelines and mandates of our State and the Centers for Disease Control and Prevention (CDC). Our prayer is these will assist us all in knowing what to expect and how we can all work together as we work to reopen PRCC facility.

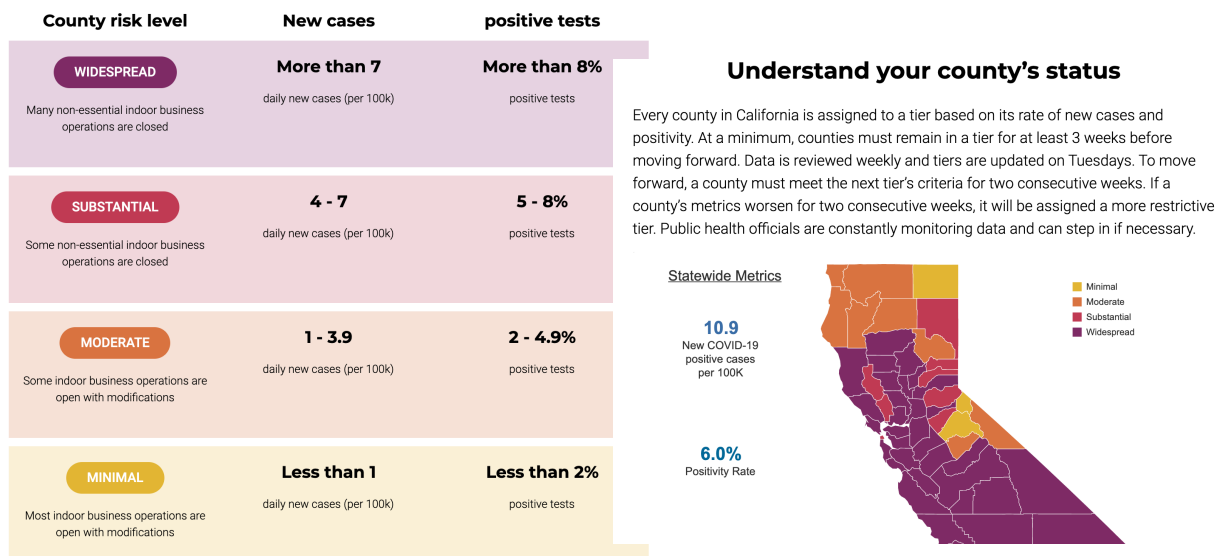
One final word as we consider regathering: we understand that regathering is a fluid term. At any moment, we may have to close the doors of our building again. If that happens, we will do that as a safety precaution and as a testimony to our community. So let's be prepared for the unexpected and extend a lot of grace as we seek the Lord and His Mission together!

Section 1: Our Re-Gathering Phases

New Covid-19 Guidelines for “Places of Worship” in California

The guidelines outlined below became effective Monday, August 31, 2020.
To stay up-to-date on latest developments, here’s the link to the newly revamped website:

<https://covid19.ca.gov/safer-economy/>



The effect this new color-coded guide has on Places of Worship are these:

Purple (Widespread) — must meet outdoors **ONLY** with modifications (modifications apparently meaning masks are now required outdoors)

Red (Substantial) — can meet indoor but max 25% of capacity or 100 people whichever is fewer.

Orange (Moderate) — can meet indoor but max 50% of capacity or 200 people, whichever is fewer.

Yellow (Minimal) — can meet indoor but max 50% of capacity.

PRCC's Gathering per Phase

Purple & Red — we will offer Outside & Online services, while encouraging small group gatherings of up to 10 to watch the online service together.

Orange & Yellow — we will offer Indoor & Online services with restrictions (Please see Section 5. II on page 8 below) and attendance limited to 50% of Worship Center capacity (approximately 100).

Section 2: Health Reminders



Your health is important. It is difficult to serve the Lord if you are deathly-sick so let's be wise in choosing whether or not to attend a live service. We strongly encourage you to consider staying home if you belong to the "vulnerable population" (over 65 or have pre-existing/compromised health issues).

Anyone with a fever or COVID-19 symptoms should stay home. If someone shows up with a fever or symptoms, they will be asked to return home and will not be allowed entrance (we realize this sounds harsh, but this is for their safety and the health and safety of other attendees). If you are caring for someone who is sick (whether COVID-19 or otherwise), please consider staying home.

We also need to always practice, and remain vigilant in, good hygiene.

COVID

CORONAVIRUS
DISEASE

19

STOP THE SPREAD OF GERMS

Help prevent the spread of respiratory diseases like COVID-19.

Avoid close contact with people who are sick.



Cover your cough or sneeze with a tissue, then throw the tissue in the trash.



Avoid touching your eyes, nose, and mouth.



Clean and disinfect frequently touched objects and surfaces.



Stay home when you are sick, except to get medical care.



Wash your hands often with soap and water for at least 20 seconds.





For more information: www.cdc.gov/COVID19

CS314915-A

Section 3: Understanding PRCC's Safety Precautions



Social Distancing

The Centers for Disease Control and Prevention (CDC) defines social distancing, or “physical distancing” as keeping space between yourself and other people outside of your home. The CDC defines “keeping space” as staying at least six (6) feet from other people.



Facility Entrance/Exits

Based on SLO County's S.T.A.R.T. Guide, we will be implementing a one-way traffic pattern into and out of our building.

- Families/Groups will be asked to “line-up” (queue) outside the building, separated by 6-10 feet. These “stations” will be marked by tape.
- Doors will be opened for you so there will be no need to touch doors.
- We will provide clear and abundant signage to designate the traffic pattern.
- Families/Groups will be assigned seating which will be designated by numbers. These numbers will be communicated to Family/Group when they're in the Queue outside.



Signage

We will provide ample signage to indicate:

- direction of movement into, around, out of the building;
- location of Hand-Sanitizers and Hand-Sanitizing Stations in the building.



Face Masks

Face Masks will be required for all Team Members AND for everyone attending. The masks should: (a) fully cover nose and mouth and prevent fluid penetration and (b) able to be secured to the head with tie-stings or elastic.

Please bring your own mask. We'll have some masks available for those who may forget to bring theirs (who hasn't forgotten to take a mask with them to the grocery store?).

Face masks can be removed by Pastor & Worship Team members once onstage, with appropriate social distancing.



Heating, Ventilation & Air-Conditioning (HVAC)

While not a substitute for any of the other PPE or safety protocols and measures, ventilation and filtration provided by our HVAC system can reduce the airborne concentration of COVID-19 and the risk of transmission through the air. We will keep our HVAC running and active throughout Sunday and through the service itself.



Cleaning & Disinfecting

We will focus on high touch areas and surfaces (tables, doorknobs, push-plates, light switches, countertops, handles, keyboards, toilets, faucets, sinks, etc.). We will clean and disinfect before and after every service.

We will provide Alcohol-Based Hand Sanitizers (dispensers and cleaning stations) throughout the building. Please use as needed.



Communion

We believe communion, though it doesn't grant salvation or additional grace, it is essential to our worship and so we WILL offer communion once-a-month in our service. We will offer both a pre-filled communion cup/wafer combination and a communion station where the cup can be picked up and the bread/wafer served by a tong with the server wearing both mask and gloves.



Music & Singing

We believe singing is an essential expression of worship to God, therefore we will continue to sing during our worship services. To minimize the spread of Covid-19, we will: (a) socially distance congregants; (b) band members; (c) assign microphones to band members (no sharing of mics); (d) Clean microphones, headphones, in-ears, drum sticks, computers, laptops, etc. with alcohol-based cleaner after every use and keep a record of when each item was last cleaned.



Tithes/Offerings

We will NOT be passing offering baskets. We will provide an Offering Box into which you may place your weekly giving. We also encourage online/mail-in giving; these are the best and safest options.

If you haven't already created an online account with PRCC through ChurchTrac, you can do that by going to **[www.pasochurch.com/about us/how to give](http://www.pasochurch.com/about-us/how-to-give)**



Coffee/Beverages/Refreshments

To minimize touch-points and unnecessary exposure, we will NOT be offering self-serve coffee stations, donuts or other group refreshments and all water fountains will be shut-off. Bottled water will be available if needed.

Section 4: Understanding our Capacity Limits and Space Restrictions

Based on California State Guidelines outlined on <https://covid19.ca.gov/safer-economy/> effective August 31, 2020 and in alignment with the State of California's "Covid-19 Industry Guidance: Places of Worship" dated May 25, 2020 and updated June 12, 2020, we will be arranging chairs and limiting our seating capacity to remain compliant with the social-distancing and occupancy limit guideline.

This reduction in seats will limit the total number of in-person worshipers at PRCC during Orange & Yellow Tiers to **100 individuals per service**.



Reservation

To best manage capacity and to remain in compliance with our local, state and federal gathering guidelines, we will be implementing a **reservation system** for our Sunday worship services. Reservations can be made by emailing (office@pasochurch.com) or calling the church office (**805.239.4771**) every week to reserve the appropriate number of seats for you and your family. Worshipers from the same household or group can sit together but there will be at least **6 feet** of separation from the family/group next to you **in all directions!**

Sign-up/registration will be: (a) on a first-come, first serve basis; (b) will begin on Monday mornings; please don't try to reserve for a future Sunday during a Sunday service and please don't assume you're on the Reservation List unless you've actually heard from the church office! and (c) indicate which service you will be attending and how many people will be joining you (we plan on offering 2 services 8:30 & 10:30 a.m.). If a service is "full" you will be given the choice of being placed on a "Waiting List" or possibly the other service if there's space.

When you call/email to make your Reservation, be sure to answer the following questions on behalf of your entire group before reserving seats:

- Am I showing any flu-like symptoms?
- Have I had a fever of 100.4 or higher in the past 14 days?
- Have I had prolonged exposure to someone who has tested positive for COVID-19?
- Is there any medical reason why I believe I shouldn't be around others?
- If you answer Yes to any of these questions, we strongly encourage you to attend **Pasochurch.online.church** OR **youtube.com/pasoroblescommunitychurch** this weekend.
- All good? Let's go ahead and save your seat.

Children

Finally, we are NOT planning on offering full Children's Ministry until we're able to return to full on-campus attendance. Children are more than welcome to attend the Sunday worship with their parents so be sure to indicate whether or not they'll be attending with you when you make your Reservation.

Section 5: What to Expect when Regathering

I. Outdoor Services

When we meet outdoor for worship, there will be NO:

- restrictions on the number of worshipers
- restricted or designated pathway for entry or exiting from worship service.

We will recommend that all worshipers provide their own:

- PPE's and face masks,
- sanitizer,
- lawn chair, and
- shade if desired.

We recommend that all worshipers observe appropriate social-distancing.

PRCC will provide color-coded stickers that will allow worshipers to communicate their social-distance preference non-verbally. Since PRCC is such a “high-touch” faith community, we are NOT endorsing nor condoning violating social-distancing guidelines, rather we are offering those who want to worship while practicing safe, social distancing, a way to do that without having to repeatedly tell people “please, don’t touch.”

PRCC will continue to practice singing as our expression of worship. For those comfortable playing or singing on the worship team without masks, we will allow them to remove their masks. We will create a 6 foot social distance between band members and a 6-10 foot social distance between band and congregation.

II. Indoor Services

When we meet indoor for worship:

- All Worshipers, Parking Attendants, Ushers, Greeters, Restroom Attendants, Everyone will wear Face Masks.
- All Worshipers will line up in queue outside the building while observing social distance
- Only Worshipers with “reservations” will be seated. (Please see “Reservations” on Page 7)
- There will be directional signage indicating the flow of foot-traffic within the building
- The Worship Center will be filled from the front to the back upon entry; the direction will reverse for exiting (back will exit first).

PRCC will provide hand-sanitizing stations and face-masks for worshipers who forget to bring their own.

PRCC will continue to practice singing as our expression of worship. For those comfortable playing or singing on the worship team without masks, we will allow them to remove their masks. We will create a 6 foot social distance between band members and a 6-10 foot social distance between band and congregation. All Worshipers must continue to wear Face Masks even during singing.

III. Online: We will continue to stream our services (indoor and outdoor). We also encourage PRCC family not comfortable with being in a large group setting to participate in a small group (up to 10) for Online Viewing and Participation.